

Discuss...

Family Relationships

- Katniss appears to have taken on the roles of provider and mother (Scene 1). What events could bring this about? What are some of the consequences this might have on our relationships with others, both in and outside of our family?
- Katniss has to leave her family not knowing if she will survive to see them again (Scene 4). What would be your feelings if you had to leave your family/loved ones, knowing you might not see them again? How do you think you would act? What might you say?

Friendship

- Rue helps Katniss learn how to escape from the Alliance (Scene 16). They also work together as a team to destroy the supplies of the Alliance (Scene 22). How can having a friend help us get out of a difficult situation? Why is it important for friends to stick and work together to solve problems and get through hard times? What is the importance of teamwork?

Peer Pressure/Acceptance

- Gale comments, “What if everyone stopped watching?” (Scene 2). What are the consequences of doing something different from the rest of society/“the crowd”? What are the consequences of giving in to that pressure, especially if it’s something you don’t believe in or agree with?
- How can you tell if someone genuinely likes you for who you are versus only likes you for superficial reasons?
- What risks do you run from changing yourself too much to gain approval, while ultimately losing who you really are?
- Katniss tells Peeta to throw a heavy metal ball to impress the tributes from other districts (Scene 8). Should we try to impress others? If so, to what extent?
- The night before the games begin, Peeta tells Katniss that he just doesn’t want “them/the game” to change who he is, and that if he dies, he still wants to be himself (Scene 11). What does he mean? Can others really change who you are or is change completely up to yourself? What does it mean to be yourself?

Safety Nets/Security

- When Katniss is hurt, Haymitch talks to sponsors and is able to get them to send her medicine (Scene 15). How can our support system help us in times of need? How can we be that support to others and recognize when someone else may need our help?

Sacrifice/Honor/Courage

- In the video shown before the reaping, it says that tributes “fight to the death in a pageant of honor courage, and sacrifice” (Scenes 3, 7). How are these characteristics seen in our relationships with others? How can we develop these characteristics?

Discuss...

Generosity/Forgiveness

- Katniss attacks Peeta for saying he's in love with her. However, later she goes and apologizes for her actions (Scene 11). What does a sincere apology look like? Why is acknowledging your mistakes and apologizing/seeking forgiveness important? How does apologizing and forgiveness help relationships?

Talents/Strengths

- When saying goodbye, Gale prompts Katniss to remember her strengths of hunting and using a bow (Scene 4). How can recognizing our talents and strengths enable us to help others and ourselves?
- After missing her first shot when trying to impress the sponsors, Katniss shoots a bulls eye, but it goes unnoticed (Scene 9). How does it feel when your accomplishments go unnoticed? How can we better support and acknowledge the accomplishments of those we love?

Promises/Honesty

- Katniss tells Peeta that she won't go to the feast, however she goes anyway to get him medicine (Scene 21). Are there times when it is okay to break a promise?

Perspective

- When asked what advice he has for them, Haymitch says, "Embrace the probability of your imminent death" (Scene 5). Although this advice seems unexpected, it actually encourages Katniss and Peeta to look at their upcoming experience from a different angle than simply survival. Why is it important to look at all angles/sides/aspects of a situation? What could the consequences be if you choose to only focus on what you want to see?
- Several times, Katniss has a flashback to a memory she has of Peeta throwing away bread to the pigs and tossing her a loaf as well (Scene 21). Are first impressions always right? What are the consequences of judging others too soon? What are the consequences of trusting too easily/not judging enough?

Survival Skills

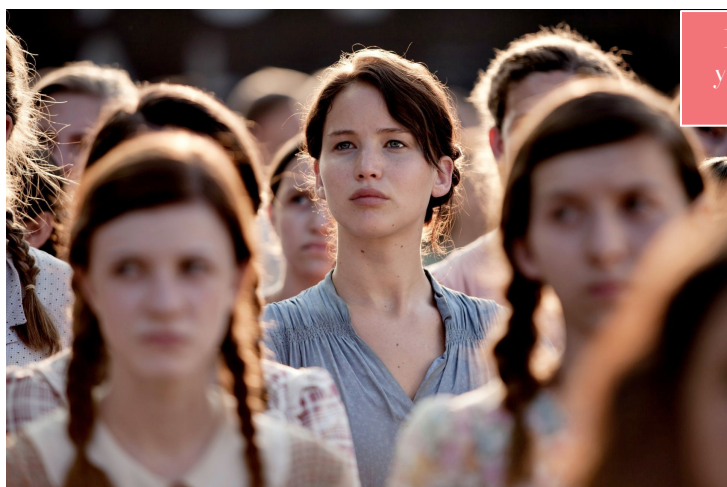
- The Alliance sets booby traps around their supplies (Scene 18). What are some relationships booby traps that are important to be aware of? How can you be prepared and avoid them?

Arrogance

- The tributes from District 1 have been trained their whole lives to compete in the Hunger Games and as a result, convey a sense of arrogance (Scene 8). What is arrogance? How can being arrogant or being with someone who is arrogant negatively affect the relationship?

Love/Dating

- Caesar Flickerman tells Peeta that if he wins, this special girl will have to go out with him (Scene 11). What attracts us to other people? (Differentiate between external and internal characteristics.)



For more resources to help teens and young adults learn healthy relationship skills, visit DiddleInstitute.org.

